

## **PIPeR: Daily GP consultation rates per 100,000 population by flu year and by age group**

Chart 1: Daily GP consultation rate for ILI and ARI based on average of weekly (5 day) figures, Scotland, all ages

Chart 2: Daily GP consultation rate for ILI and ARI based on average of weekly (5 day) figures, Scotland, ages 0-4

Chart 3: Daily GP consultation rate for ILI and ARI based on average of weekly (5 day) figures, Scotland, ages 5-14

Chart 4: Daily GP consultation rate for ILI and ARI based on average of weekly (5 day) figures, Scotland, ages 15-64

Chart 5: Daily GP consultation rate for ILI and ARI based on average of weekly (5 day) figures, Scotland, ages 65+

### Notes

1. Figures calculated from PIPeR4 data as at 30th September 2010
2. Rates per 100,000 population are daily rates calculated from weekly figures based on 5 day working week
3. Where a week includes a public holiday, rates will be based on reduced weekly figures

Chart 1: Daily GP consultation rate for ILI and ARI based on average of weekly (5 day) figures, Scotland, all ages

Source: Health Protection Scotland

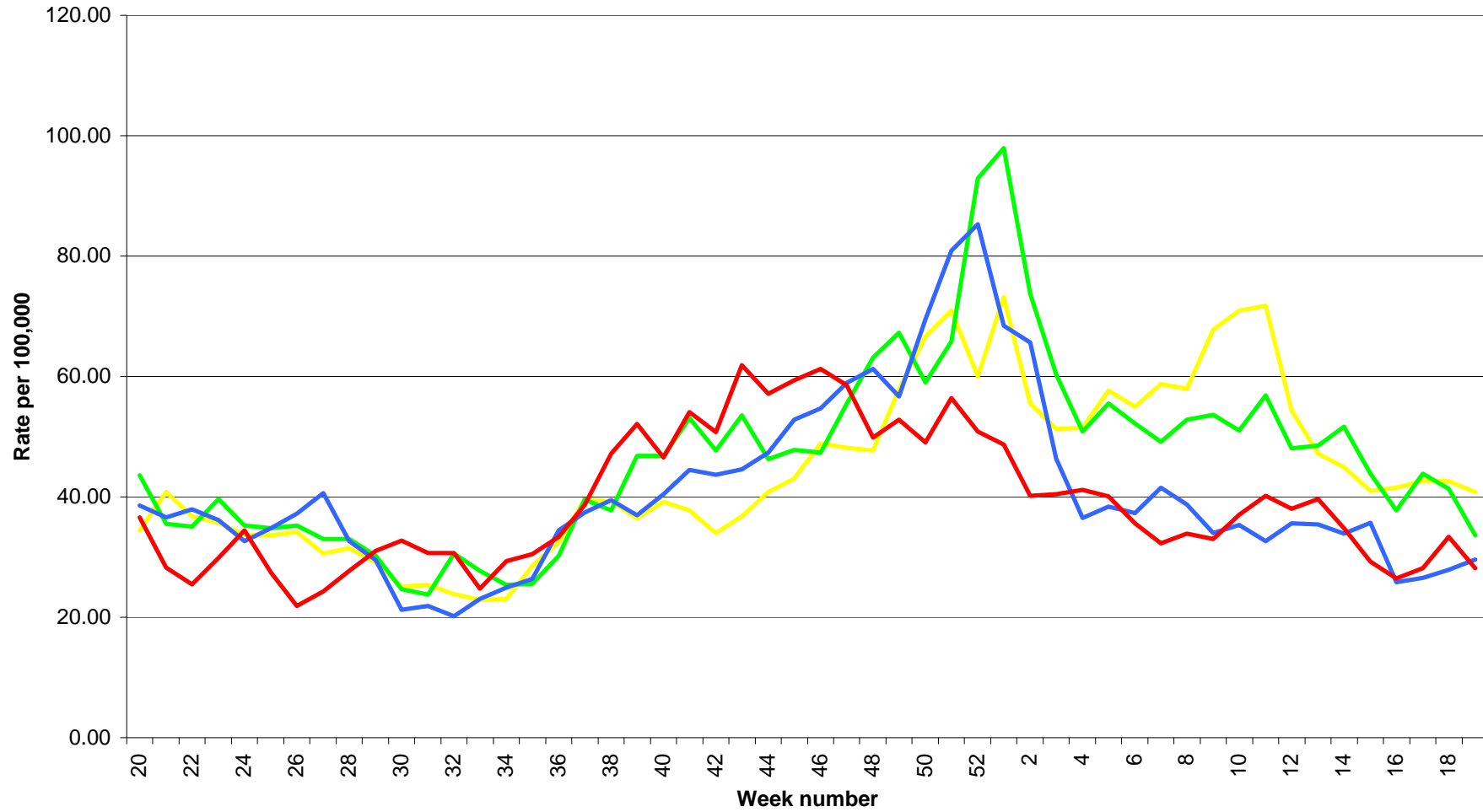


Chart 2: Daily GP consultation rate for ILI and ARI based on average of weekly (5 day) figures, Scotland, ages 0-4

Source: Health Protection Scotland

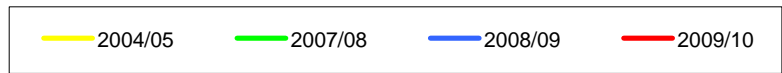
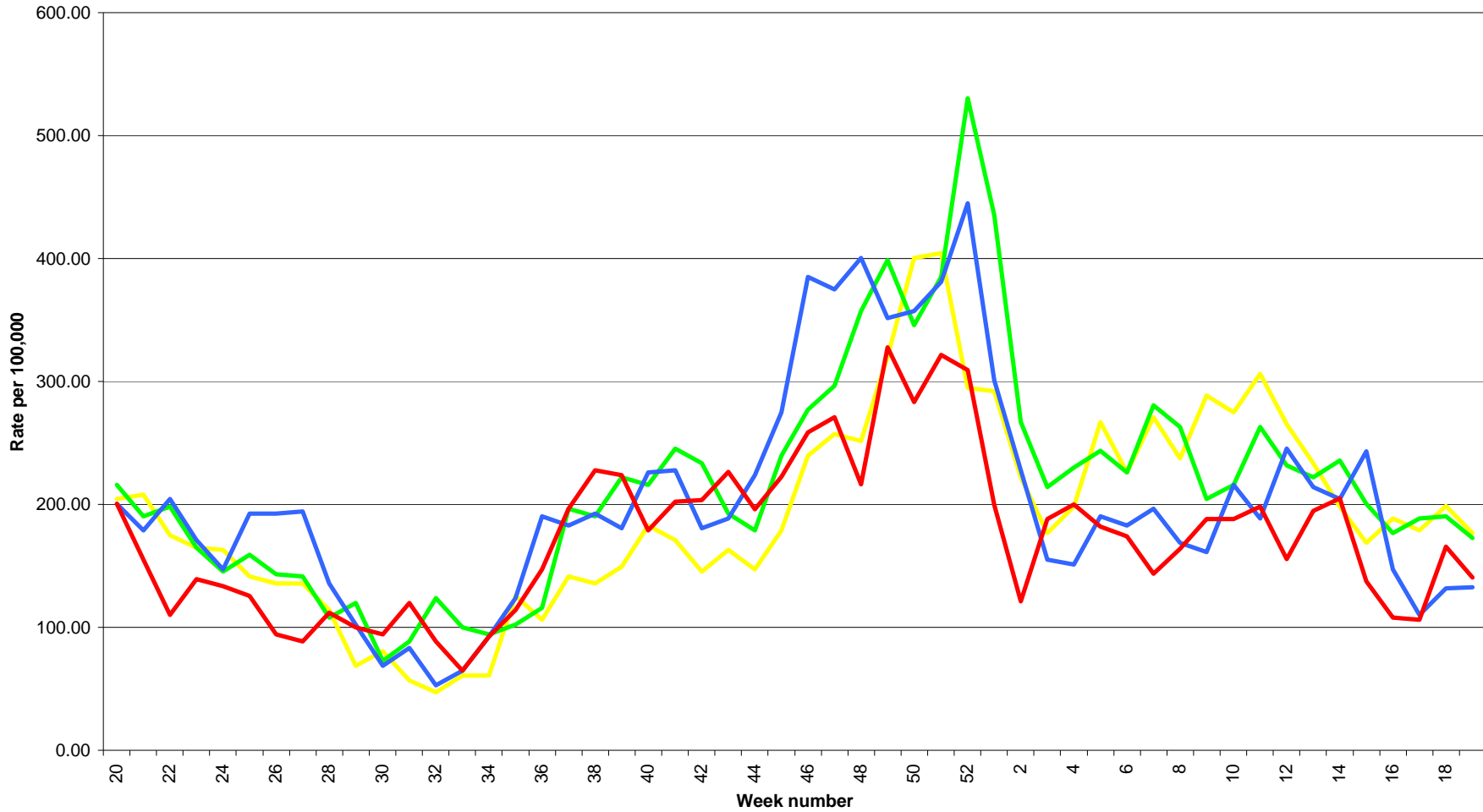


Chart 3: Daily GP consultation rate for ILI and ARI based on average of weekly (5 day) figures, Scotland, ages 5-14

Source: Health Protection Scotland

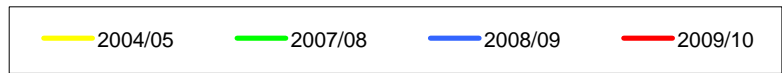
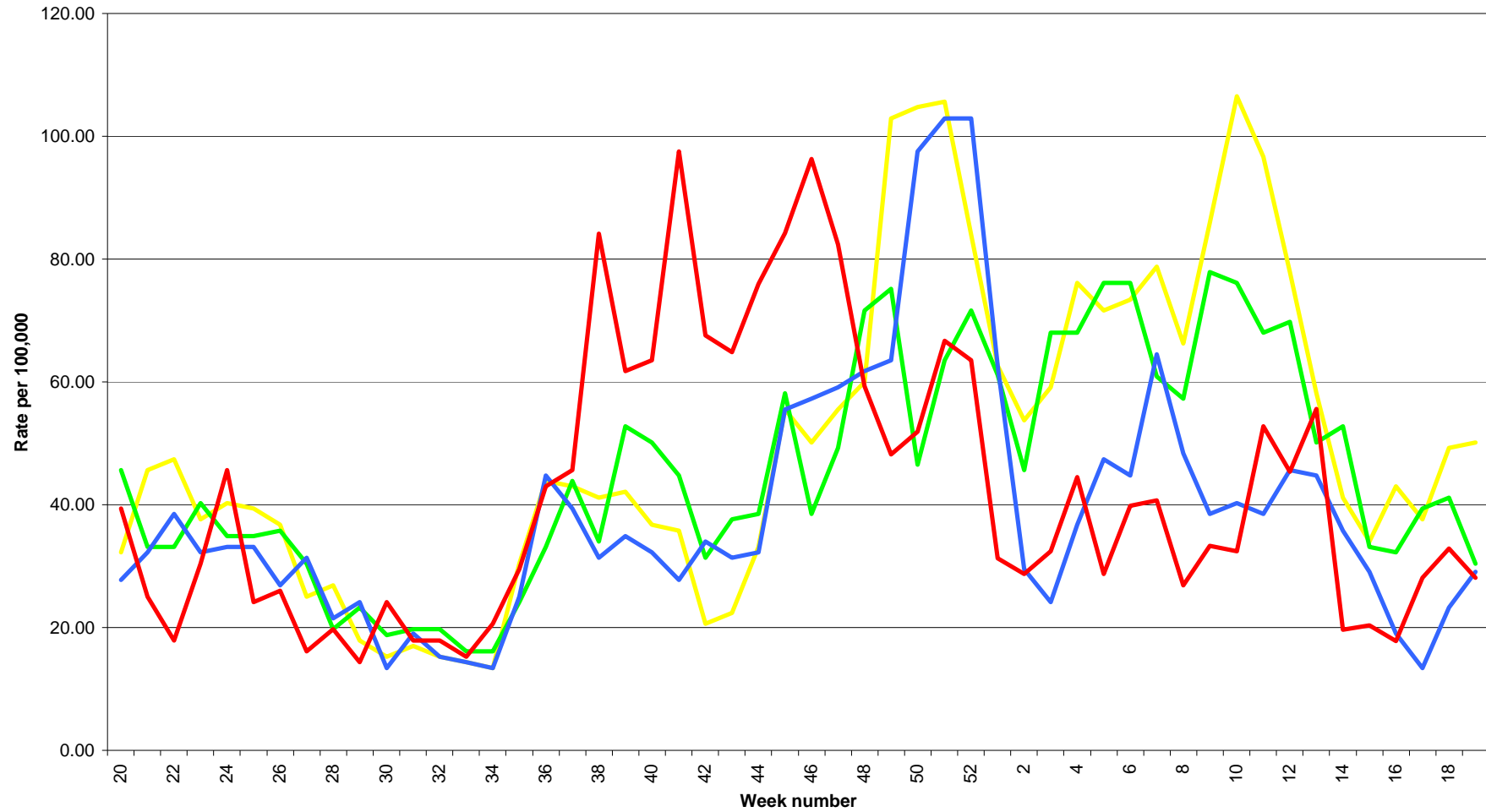


Chart 4: Daily GP consultation rate for ILI and ARI based on average of weekly (5 day) figures, Scotland, ages 15-64

Source: Health Protection Scotland

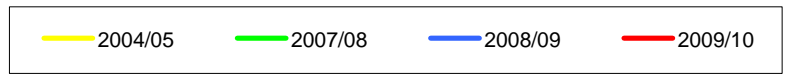
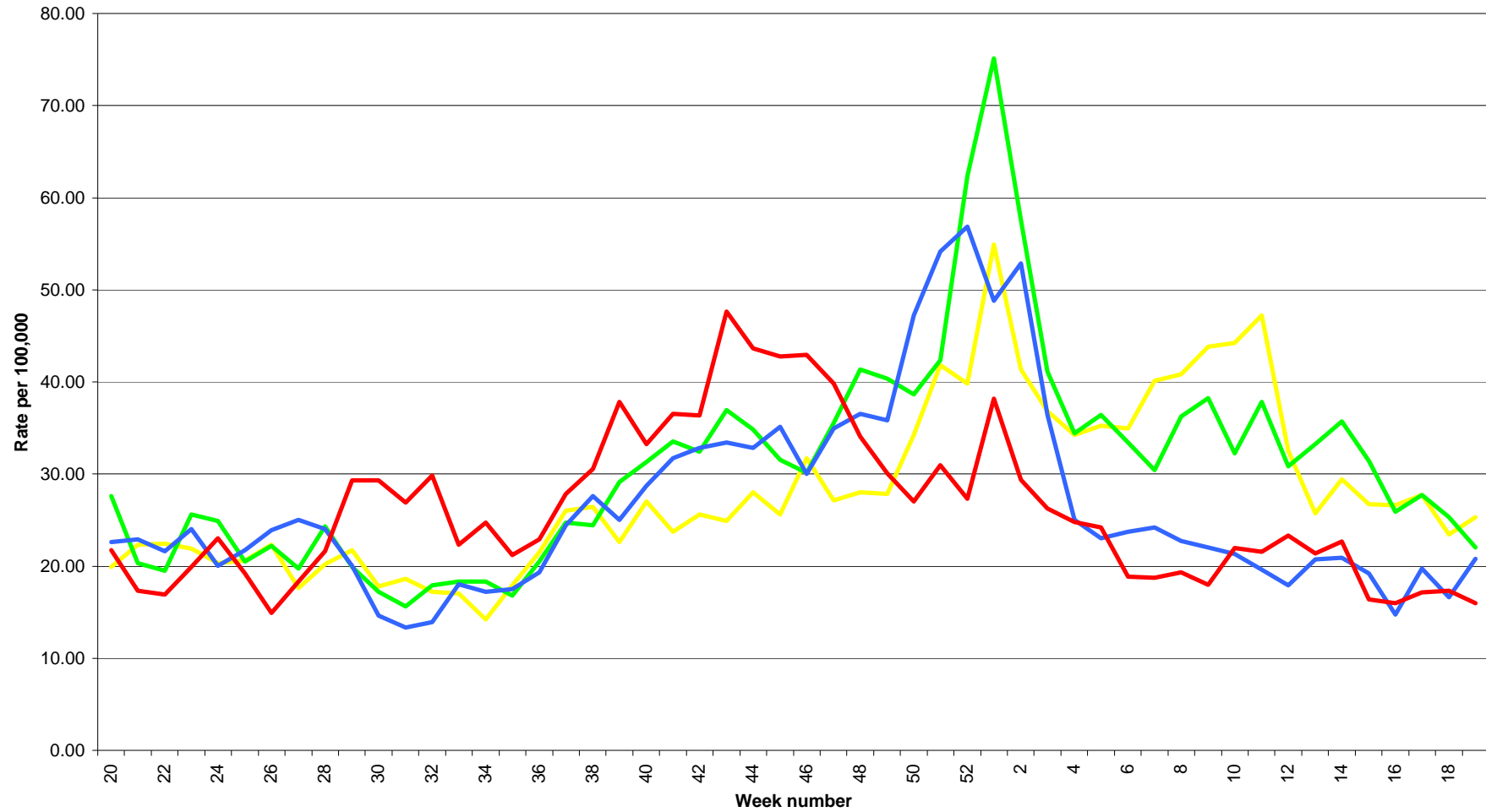


Chart 5: Daily GP consultation rate for ILI and ARI based on average of weekly (5 day) figures, Scotland, ages 65+

Source: Health Protection Scotland

